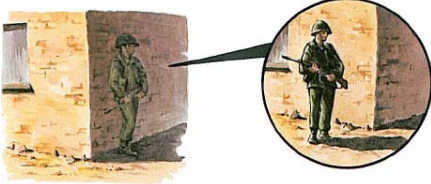


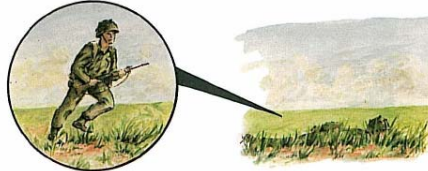
PERSONAL CAMOUFLAGE AND CONCEALMENT

WHY THINGS ARE SEEN...

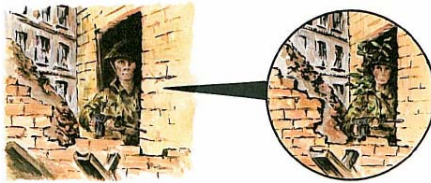
Shadow... keep in the shadow of a bigger object



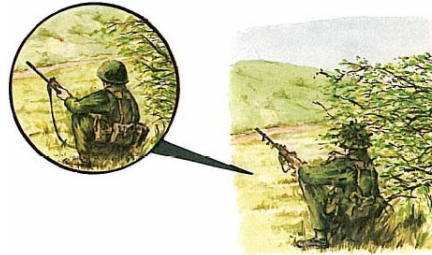
Silhouette... Don't stand against a skyline



Surface... Don't look different from your surroundings



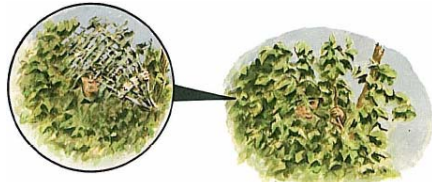
Shape... Disguise your shape (especially your Equipment).



Spacing... Keep spread out - but not too regularly



Movement... Move carefully



AVOID...

Leaning out of windows



Isolated cover



Skylines



CAMOUFLAGING YOURSELF.....



Too much

Just right

Too Little